

GE Healthcare

Centricity™ Universal Viewer Zero Footprint Resource Guide



Intelligent Solutions for Optimal Care

Founded in 1923, GE Healthcare drives optimal healthcare performance through connected and intelligent workflow solutions that help enable enhanced decision support, improved outcomes and quality care.

This interactive Resource Guide highlights how GE Healthcare's Centricity™ Solutions for Enterprise Imaging connect advanced diagnostic tools and system-wide image management platforms across the care continuum to help healthcare organizations improve diagnostic speed and confidence.

Centricity Solutions for Enterprise Imaging deliver a common viewing, analytics and vendor-neutral archiving experience across specialties. Designed to support multiple care-specific workflows and offering clinicians the ability to work independent of location, these solutions offer healthcare organizations the tools they need to build collaborative care networks. Featured in this Resource Guide is the Centricity Universal Viewer Zero Footprint (ZFP), a solution offering physicians a unified view of medical images with anytime, anywhere* access from multiple mobile devices and platforms.

GE Healthcare's enterprise imaging solutions encompass four key components including Visualization, Workflow, Collaboration and Archiving. More than 3,000 organizations trust Centricity Solutions for Enterprise Imaging because GE Healthcare delivers high-quality service, reliability and technology innovation, helping providers reduce the cost of ownership today while preparing for the challenges of the future.

Learn more about the role GE Healthcare plays in optimizing healthcare organizations' investment in imaging IT to help streamline healthcare costs, increase diagnostic confidence and enhance the quality of patient care.

[Click here for more information on Centricity Solutions for Enterprise Imaging](#)

*Where Internet is available

Centricity Universal Viewer ZFP is available with the CPACS foundation, the PACS-IW foundation with Centricity Enterprise Archive and Centricity Clinical Archive. Centricity Clinical Archive includes the following product components: Centricity Enterprise Archive, Centricity Universal Viewer ZFP, XDS Registry, Centricity Clinical Gateway, NextGate MatchMatrix EMPI and PACSGEAR PacsSCAN.™

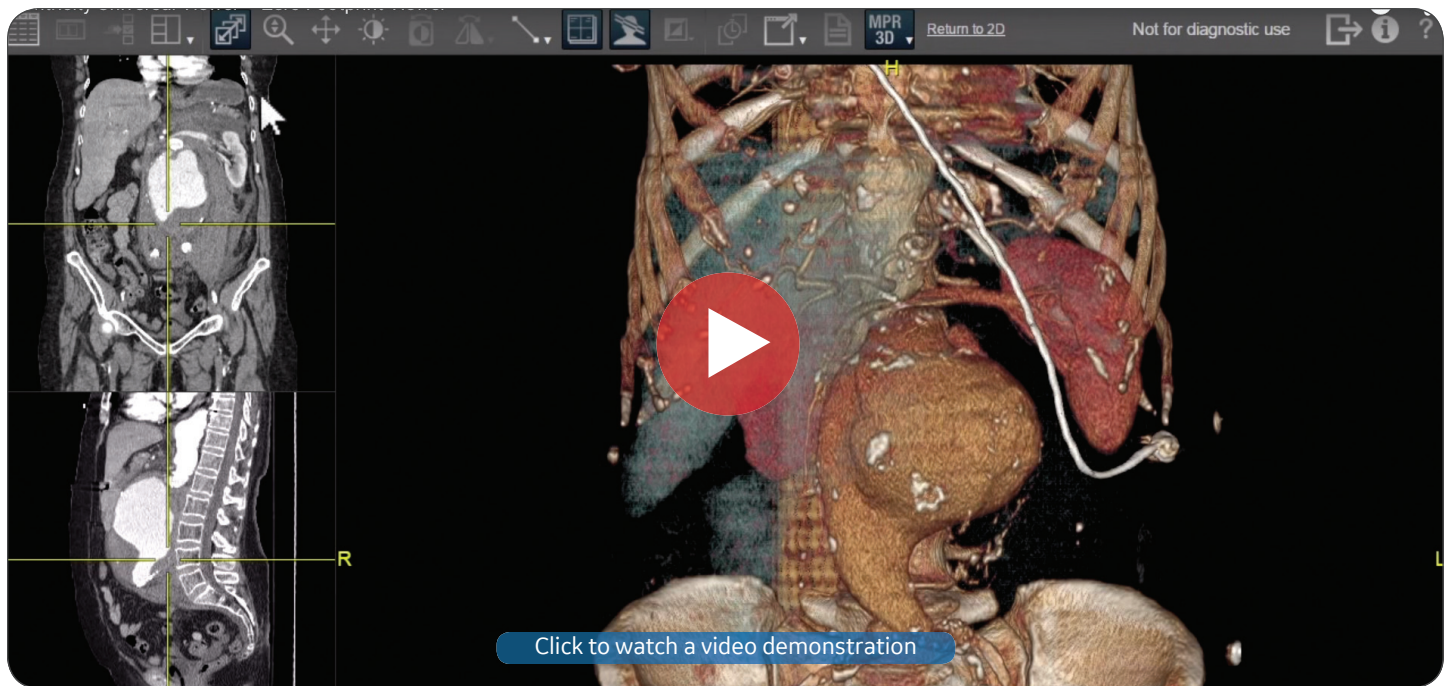


Bill Stoval
General Manager,
Enterprise Imaging
GE Healthcare IT

Contents

- 3** Centricity Universal Viewer: Where It All Comes Together
- 4** Achieving Measurable Results with the Zero Footprint Viewer
- 5** Customer Testimonials
- 6** Enabling High-Quality Care with the Zero Footprint Viewer at Huron Medical Regional Center
- 7** Centricity Solutions for Enterprise Imaging

Centricity Universal Viewer: Where It All Comes Together



Centricity Universal Viewer Zero Footprint Viewer (ZFP) offers enhanced usability and access. It is Web-accessible via any browser, on a PC, Mac® or mobile device, providing users fast access to vital study and patient information stored in a PACS, RIS, EMR or HIS anywhere there is Internet connectivity. Its Web-based architecture enables easy administration from virtually anywhere.¹

Centricity Universal Viewer ZFP helps simplify access to images for non-diagnostic viewing, with easy deployment of Web-based software reducing the need

for IT support and software upgrades. It allows organizations to securely view medical images and other clinical content in a single user interface and provides a patient-centric view that is complementary to organizations' EMRs. More importantly, it can be viewed on almost any browser or device — a PC, Mac or mobile device — from anywhere,¹ building confidence and bringing greater flexibility and function to physicians.

All this is meant to help with the growing demand of healthcare systems to deliver more and better quality with less,

requiring greater integration of services and collaboration across departments, hospitals and communities. Centricity Universal Viewer ZFP can serve as a key component to help solve enterprise imaging challenges.

[Watch Demo Now](#)

[Click for more information about the Centricity Universal Viewer](#)

¹Anywhere there is an Internet connection

Achieving Measurable Results with the Zero Footprint Viewer



GE Healthcare IT

Zero Footprint Viewers
EMR, VNA and Referring Clinicians

Imagination at work.

Click to watch this webinar

As part of healthcare’s evolution from a fee-for-service model to an outcome-driven and patient-centric model, imaging is transitioning from a silo department to an enterprise-level priority in order to meet



healthcare organizations’ demand for more viewing capabilities.

The webinar “Zero Footprint Viewer – EMR, VNA and Referring Clinicians,” presented by GE Healthcare and *Imaging Technology News*, identifies key capabilities of GE Healthcare’s Centricity Universal Viewer ZFP, and how a regional medical center helped foster referrer relationships using Centricity Universal Viewer ZFP.

The webinar featured insights from Chad Moser, MRI technologist and PACS administrator for Huron Regional Medical Center (HRMC) in Huron, South Dakota; Atul Setlur, senior product manager for Enterprise Imaging Workflows at GE Healthcare; and Tom Zimmerman, region product marketing manager at GE Healthcare.

According to Moser, who is responsible

for implementing new equipment and software, training staff and administration of the PACS at HRMC, the center had to upgrade its Web-based PACS viewer in order to provide easy access to medical images and important patient data to its physicians. To address this challenge, HRMC chose Centricity Universal Viewer ZFP to image-enable its EHR, offering a progressive Web-based viewing strategy to get images to providers in a reliable, timely and financially efficient fashion.

“We liked the Universal Viewer ZFP because it can be viewed on any modern browser,” Moser said. “The ZFP is simple and easy to use, and yet it is very capable. The interface is so intuitive that we only have to provide minimal training to end users.”

Watch This Webinar Now

Customer Testimonials

Huron Regional Medical Center

Huron Regional Medical Center (HRMC) is a 25-bed critical regional hospital that serves seven counties in the Huron, South Dakota area. To help ensure it provides top-quality care to its patients and stays competitive with larger hospitals, HRMC partnered with GE Healthcare to introduce Centricity Universal Viewer ZFP, allowing them to deliver images to providers and patients in a timely fashion. With the ZFP viewer, surgeons and physicians can launch patients' images from almost any browser or mobile device, as well as perform reformats and volume rendering, giving physicians at HRMC the ability to review imaging studies quickly when necessary.

[Read more about the Huron Regional Medical Center story on page 6](#)



South Nassau Communities Hospital

For South Nassau Communities Hospital (SNCH) in Oceanside, New York, radiology is becoming more and more important, and for many patients, even replacing the physical exam. The Web-based Centricity Universal Viewer has improved efficiency by allowing SNCH physicians to access the PACS at any given location. Its built-in 3-D processing functions, multiplanar reconstructions and advanced processing functions are well integrated, making the use of these tools a common part of the workflow. With Centricity Universal Viewer radiologists can customize their hanging protocols, allowing them to personalize the way they practice radiology.



U.S. Olympic Committee

The U.S. Olympic Committee and its recently opened Ted Stevens Sports Services Center in Colorado Springs, Colorado provide critical care services to Team USA. With one of the largest mobile patient populations, the U.S. Olympic Committee utilizes GE Healthcare's Centricity Practice Solution to help ensure quick access to athletes' medical records and imaging studies from almost anywhere in the world. The Centricity PACS-IW has allowed the committee to create a central repository of its patient records with easy access to different imaging from pre- and post-studies. Measuring more than 3,000 variables on any type of patient encounter, the PACS gives the committee the ability to select the correct modality for imaging that is necessary, helping to ensure high-quality imaging and a healthy and successful Team USA.



The results expressed in this document may not be applicable to a particular site or installation and individual results may vary. This document and its contents are provided to you for informational purposes only and do not constitute a representation, warranty or performance guarantee. GE disclaims liability for any loss, which may arise from reliance on or use of information, contained in this document.

Regional Care with Zero Footprint Viewer

Huron Medical Regional Center integrates flexibility and function with new image viewing technology

The Challenges

Being a small facility in rural South Dakota, Huron Regional Medical Center (HRMC) strives to stay competitive: keeping care local and patients coming back. Physicians and clinicians take pride in providing high-quality care in this community of about 13,000 people, investing in leading-edge technology and balancing the need to keep ever-increasing costs in check. But the cost burden has become a lot heavier lately. Small facilities are juggling heavier costs amidst cuts in reimbursement from Medicare, Medicaid and other insurance reimbursement, and also the burdens of the Affordable Care Act.

High-quality care today means expedited and excellent care. To accomplish that, physicians need immediate access to the right information for the right patient at the right time. Medical images are especially integral to swift patient care decision-making. Quick and easy access to medical images was a big challenge as HRMC's web-based PACS viewer was aging and in need of an upgrade. The turning point came with the advent of a new EHR. Physicians insisted they needed a link to the EHR to access images and unlock important patient data. Radiology IT couldn't keep up with their outdated web-based image viewer.

"We went from supporting a few dozen computers to supporting several hundred computers," says PACS Administrator Chad Moser, RTRMR. "That became very labor intensive with admin rights and the like. And if a new browser came out, we had to go around and install all those new plug-ins. It got very difficult."

Success also hinges on systems working 24/7. That is where HRMC relies on GE's service. "If I send an iCenter request for service, we will receive a call back within the hour. We have come to depend on GE's expert support and high-quality products," Moser said.

The Solution: ZFP

Implementing ZFP at its facility has allowed the radiology team at HRMC to enable Web access for physicians and ensure a smooth technology adoption. Quick access to images also allows physicians to place the patient right at the center of care, allowing them to outpace their competition with some of the larger hospitals and bigger cities in the region.



Challenge

- Stay competitive – keep care local and patients coming back
- Balance high-end technology with costs
- Quick and easy access to images within the EHR

Solution

- Progressive Web-based image viewing in EHR and enterprise
- Easy access anywhere Internet access is available
- Images viewable through most modern browsers
- Independent of operating system of device
- Intuitive user interface
- Seamless integration

Outcomes

- Reduce burden of installing and maintaining software
- Improve relationships with referring physicians
- Faster, more informed decisions for quick patient care
- Enhanced patient confidence

[Click here to view or download the full HRMC case study](#)

Centricity Solutions for Enterprise Imaging

We know that you could partner with a variety of vendors for enterprise imaging. But we believe there are three reasons why you should consider GE Healthcare. They come down to our:

- Experience
- Breadth of solutions
- Outcomes

When it comes to experience, while there are point solutions out there that address one or two components of an enterprise imaging strategy, GE Healthcare is unique.

From a robust modality business, to advanced AW application to innovative enterprise imaging software, we cover each of the four elements that we believe are necessary for enterprise imaging.

Last, and most importantly, is outcomes. Simply put, our success is defined by your success. And our focus each day from all of our thousands of employees is to develop and deliver software-enabled solutions that enhance your diagnostic speed and confidence in measurable and meaningful ways.

We hope this overview helps to highlight three of the reasons why we believe GE Healthcare could be the right, long-term partner for your enterprise imaging strategy.

You need to address these enterprise-wide challenges



¹ Radiologists' Burden of Inefficiency Using Conventional Imaging Workstations, Dr. Bruce Hillman and Dr. Bhavik Pandya, Journal of the American College of Radiology, November 2013; ² Multidisciplinary Team Redesigns Care Processes and Systems, Leading to Significantly Improved Performance on Core Measures in Four Clinical Areas, Phyllis Justus, RN, MSN, NE-BC Director of Nursing, professional Practice; Carolinas Medical Center-University; Rose Brandau, RN, MSN Vice President/Chief Nurse Executive Carolinas Medical Center-University; ³ Timed internally; new account registration process takes 4-5 minutes; ⁴ We Calculate a 74% Reduction, But It's Hard To Compare Apples To Apples by Andrew Reichman, August 25, 2011.

About GE Healthcare

GE Healthcare provides transformational medical technologies and services to meet the demand for increased access, enhanced quality and more affordable healthcare around the world. GE (NYSE: GE) works on things that matter – great people and technologies taking on tough challenges. From medical imaging, software & IT, patient monitoring and diagnostics to drug discovery, biopharmaceutical manufacturing technologies and performance improvement solutions, GE Healthcare helps medical professionals deliver great healthcare to their patients.

©2015 General Electric Company.

General Electric Company reserves the right to make changes in specifications and features shown herein, or discontinue the product described at any time without notice or obligation. This does not constitute a representation or warranty or documentation regarding the product or service featured. Timing and availability remain at GE's discretion and are subject to change and applicable regulatory approvals. Contact your GE representative for the most current information.

The results expressed in this document may not be applicable to a particular site or installation and individual results may vary. This document and its contents are provided to you for informational purposes only and do not constitute a representation, warranty or performance guarantee. GE disclaims liability for any loss, which may arise from reliance on or use of information, contained in this document.

GE, the GE Monogram, Centricity, and imagination at work are trademarks of General Electric Company.

Centricity Universal Viewer ZFP is available with the CPACS foundation, the PACS-IW foundation with Centricity Enterprise Archive and Centricity Clinical Archive.

Centricity Clinical Archive includes the following product components: Centricity Enterprise Archive, Centricity Universal Viewer ZFP, XDS Registry, Centricity Clinical Gateway, NextGate MatchMetrix EMPI, and PACSGEAR PacsSCAN.™

Mac is a trademark of Apple, Inc., registered in the U.S. and other countries.

All other product names and logos are trademarks or registered trademarks of their respective companies.

General Electric Company, by and through its GE Healthcare division.



imagination at work

JB33912US